

Anti-Vibration ProRack

Ruggedised solutions for the deployment, transport and storage of fragile 19-inch electronic rack-mount equipment

In 1970, CP Cases was Europe's first 'Flight Case' company, manufacturing high quality transit cases for the live music industry. From those early days using best American hardware, quality birch plywood and a variety of hard wearing surface laminates, CP Cases built an R&R customer base to rival Richard Branson's juke box and has amassed over 40 years' experience, building high quality, fit-for-purpose cases and 19-inch racks for a whole raft of very demanding industries.



CP Cases' ProRack is a hardwearing, rugged outer case with a suspended internal 19-inch chassis that is calibrated to support equipment from vibration, shock and impact hazard: the ultimate transit solution for your 19-inch electronic rack-mount equipment.

The traditionally built outer case made from top-grade, laminated birch plywood, cabinet-making edge joints with glue & pin construction gives the outer rack body rigidity and impact-resistant characteristics that protect against the most severe abuse and bad handling.

The patented internal anti-vibration pre-stressed steel chassis compliments the rigid outer body to give a "cage-within-a-cage" where all shock and vibration is 'seen' by the elastomeric AVM's (anti vibration mounts). These can be calibrated to give the best optimised support and protection for the payload – whatever the weight and fragility.

CP Cases' ProRack is now widely used in many commercial, industrial and military industries, being shipped worldwide for telecomms, outside broadcast, and data collection applications.

ProRack is available in U-heights from 4U to 30U in 2U intervals, and various chassis depths.



Design Features

- Heavy-duty internal anchor plates secure eight tuned elastomeric anti-vibration mounts to the case body
- Each mount is focused towards the centre of weight/mass of the equipment, offering consistent support characteristics regardless of case orientation
- 44 mm sway space (chassis excursion)
- Two choices of AVM hardness available: 45 Shore hardness (type A - medium) and 60 Shore hardness (type B - hard)
- Lightweight pre-stressed steel suspended chassis, with punched burst holes for rigidity and weight saving
- Vertical rack rails are 2 mm zinc-plated steel formed into a double "Z" mounting rail for adequate support of very heavy equipment
- Open "floating" 19-inch chassis allows for all-round air circulation
- Side stiffening plates are used on sizes 16U and above to add vertical rigidity to rack mount rails

Five Reasons to buy CP Cases ProRack:

1. 40 years "on the road" with discerning customers in extreme environments
2. No-compromise selection of raw materials and components
3. Proven, glue & pin cabinet-style construction
4. Unique, patented interior anti-vibration chassis
5. ATA300 (cat 1), BS5954, DIN41 IEC297 compliant

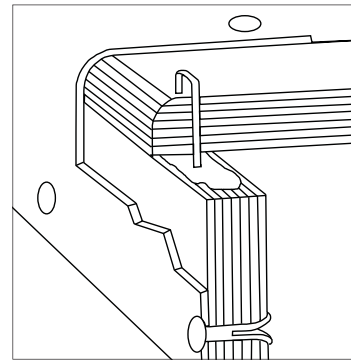
AVM Shore Hardness

AVM Hardness	Dims mm diameter/length	Shore Hardness	Max Static load compression/mm	Max Static load shear/mm	Recommended load weight
Type A (Medium)	30 mm / 30 mm	45	18 kg / 3.0 mm	8.5 kg / 6.9 mm	60 - 110 kg
Type B (Hard)	30 mm / 30 mm	60	38 kg / 2.9 mm	15 kg / 6.6 mm	110 - 210 kg

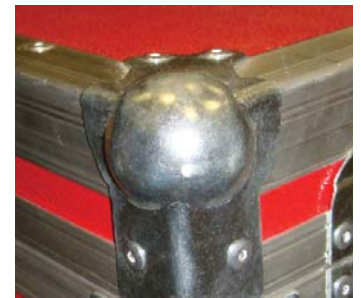
Anti-Vibration ProRack

Standard Designs allowing Custom Specifications

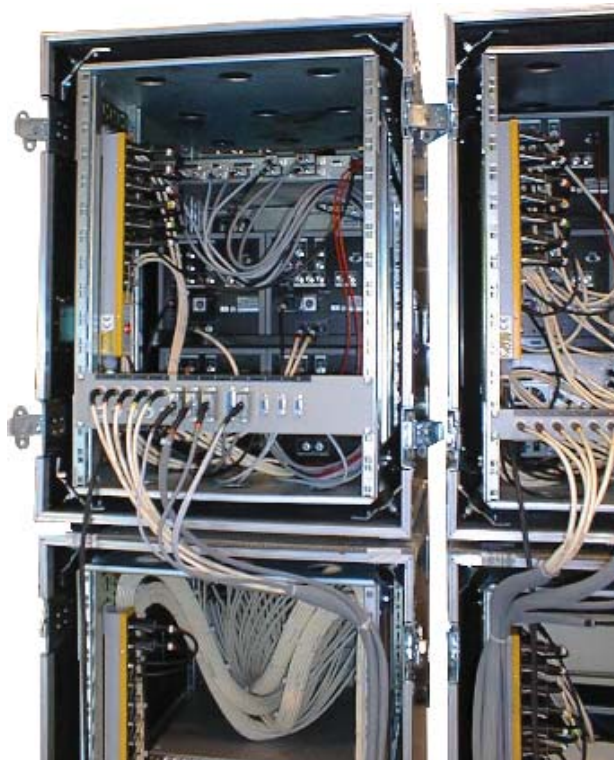
- 500 mm and 700 mm chassis depths as standard
- 9 mm top-grade birch plywood is bonded with a phenolic resin adhesive, which is weatherproof, waterproof and boil-proof
- Conforms to: BS6566 Pr 8/type WBP, EN314-2/3rd class, DIN 68705 Pt3/ type BFU100, and SFS2415/type EXT. Size and right angle tolerance meets the standard SFS4093 and EN315 requirements
- Cabinet construction: glued and pinned prior to riveting on edging angle to further enhance strength
- Non-burr protective black fibre edging for easy handling
- The standard ProRack finish is in non-reflective, abrasion-resistant black vulcanised fibre laminate, epoxy/heat/pressure-bonded to the birch ply. The vulcanised fibre used in Pro-Racks conforms to BS2768 and BS216, and is biodegradable
- Low-profile, self-pierce nickel-plated bifurcated (clench) rivets are used to secure the edging angle - for life-long service
- Heavy-duty, zinc-plated knuckle ball corners are secured with stainless steel rivets
- Dust-proof aluminium-extrusion male/female lid edging gives a perfect lid fit
- Fully recessed sprung handles, loading capacity = 800 kg
- "Cam operated" butterfly catches secure slim-line lids to body
- Skids are fitted to the base of all Pro-Racks for lifting, stacking and storage
- M6 screws, skiffy washers and floating captive cage nuts supplied with all ProRacks



Glue & pin, cabinet-style construction



Heavy-duty, zinc-plated knuckle ball corners



Options & Accessories

- HPVC and HPL (high pressure laminate) finishes are available as alternatives to our traditional black, non-reflective fibre laminate
- Internal vertical cable trays
- Rear rack rails for patch bays and hard wiring
- Patented, hook-in/hook-out rack side supports shelves, easily secured by 4 x 6 mm steel screws
- Folding legs in lid - pull out to form table
- Cable winding cleats (double lid racks only)
- Fully recessed, sprung "eye" shackle for winch lifting
- 100 mm diameter detachable swivel castors (may be positioned on the case body or rear lid) max loading per castor = 70 kg
- Wheel boards in 18 mm ply, with four 100 mm swivel castors (two with locking brakes, two without)
- Recessed castor dishes 'locate' wheels when stacking racks
- Packs of extra rack rail fixings are available
- 19-inch storage drawers and other 19-inch housing
- Silk screen-printing, engraved, etched or swing labels can be added for identification and/or to enhance your corporate identity
- Stencilling, bar coding, standard information/warning signs, customer supplied label if preferred
- Special designs – to your specification

Anti-Vibration ProRack - Sizes & Prices

Racks

Part Number	U-Height	External Depth inc lids mm	External Width mm	External Height mm	Lid External Depth mm	Weight kg	Unit price £ ex VAT
PRS04502	4U	705	620	331	78	28.0	£948
PRS04702	4U	905	620	331	78	30.0	£1,066
PRS06502	6U	705	620	420	78	31.5	£1,045
PRS06702	6U	905	620	420	78	34.0	£1,152
PRS08502	8U	705	620	509	78	35.0	£1,157
PRS08702	8U	905	620	509	78	38.0	£1,275
PRS10502	10U	705	620	598	78	38.5	£1,235
PRS10702	10U	905	620	598	78	42.0	£1,361
PRS12502	12U	705	620	687	78	42.0	£1,330
PRS12702	12U	905	620	687	78	46.0	£1,462
PRS14502	14U	705	620	775	78	45.5	£1,398
PRS14702	14U	905	620	775	78	50.0	£1,515
PRS16502	16U	705	620	864	78	49.0	£1,445
PRS16702	16U	905	620	864	78	54.0	£1,545
PRS18502	18U	705	620	953	78	52.5	£1,525
PRS18702	18U	905	620	953	78	58.0	£1,632
PRS20502	20U	705	620	1042	78	56.0	£1,545
PRS20702	20U	905	620	1042	78	62.0	£1,661
PRS22502	22U	705	620	1131	78	59.5	£1,633
PRS22702	22U	905	620	1131	78	66.0	£1,755
PRS24502	24U	705	620	1220	78	63.0	£1,702
PRS24702	24U	905	620	1220	78	70.0	£1,833
PRS26502	26U	705	620	1309	78	66.5	£1,794
PRS26702	26U	905	620	1309	78	74.0	£1,955
PRS28502	28U	705	620	1398	78	70.0	£1,854
PRS28702	28U	905	620	1398	78	78.0	£1,990
PRS30502	30U	705	620	1487	78	73.5	£1,941
PRS30702	30U	905	620	1487	78	82.0	£2,069
PRS34502	34U	705	620	1709	78	80.5	£2,014
PRS34702	34U	905	620	1709	78	90.0	£2,142

Options & Accessories

Part Number	Description	External Height mm	Weight kg	Unit price £ ex VAT
PRSWB50	Wheel board (to suit frame depth of 500 mm)	154	9.5	£152
PRSWB70	Wheel board (to suit frame depth of 700 mm)	154	10.0	£152
PS451505	Support shelf 500 mm (per pair inc fixings)		0.7	£53
PS451705	Support shelf 700 mm (per pair inc fixings)		1.1	£53
423PRO	Spare M6 fixings (pack of 12)			£9

Key to Anti-Vibration ProRack Part Numbering

PR	S	16	50	2
ProRack	Suspended Rack	U-Height	Frame depth	Number of lids